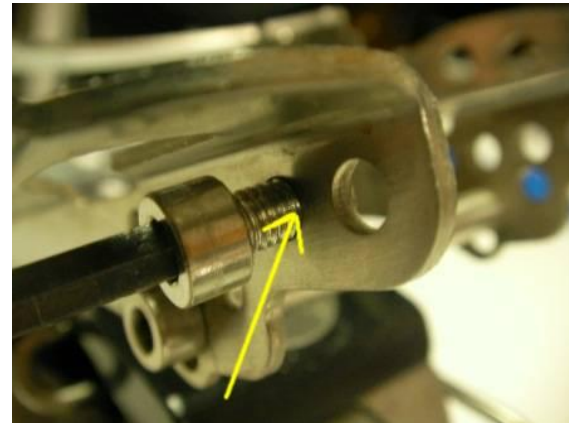
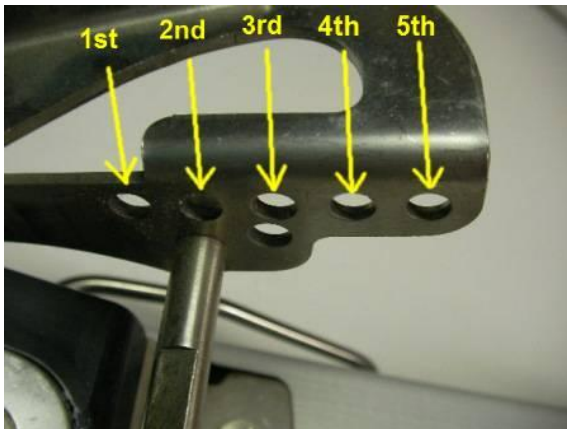


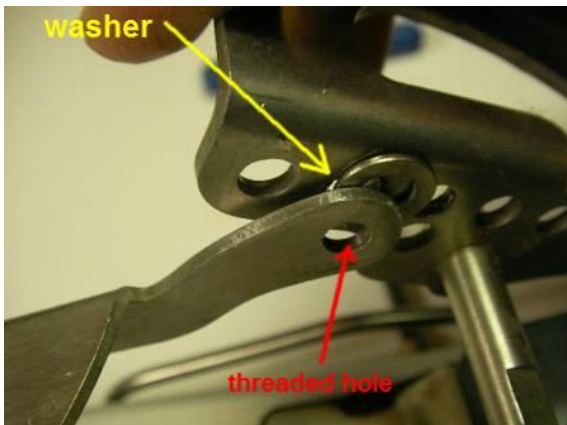
These instructions describe how to secure heel attachment to the Telebulldog toe piece.



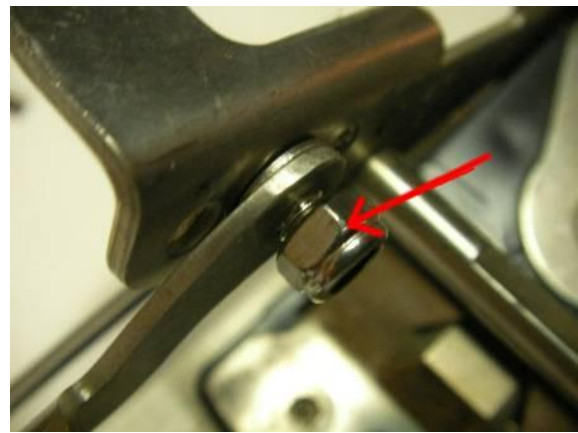
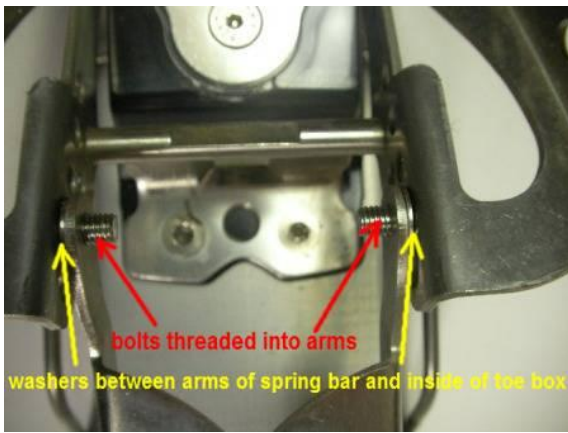
Picture above shows the parts needed to secure heel attachment to the toe piece.



There are 5 positions to attach heel piece. The rear hole in the toe box is the most active and accommodates larger ski boots. Insert the bolts from outside of toe box at chosen hole. Suggested positions: boot size 23-25 use 3rd hole, size 26-28 use 4th hole, and 29-31 use 5th hole. If you like a very active binding use the 5th hole...



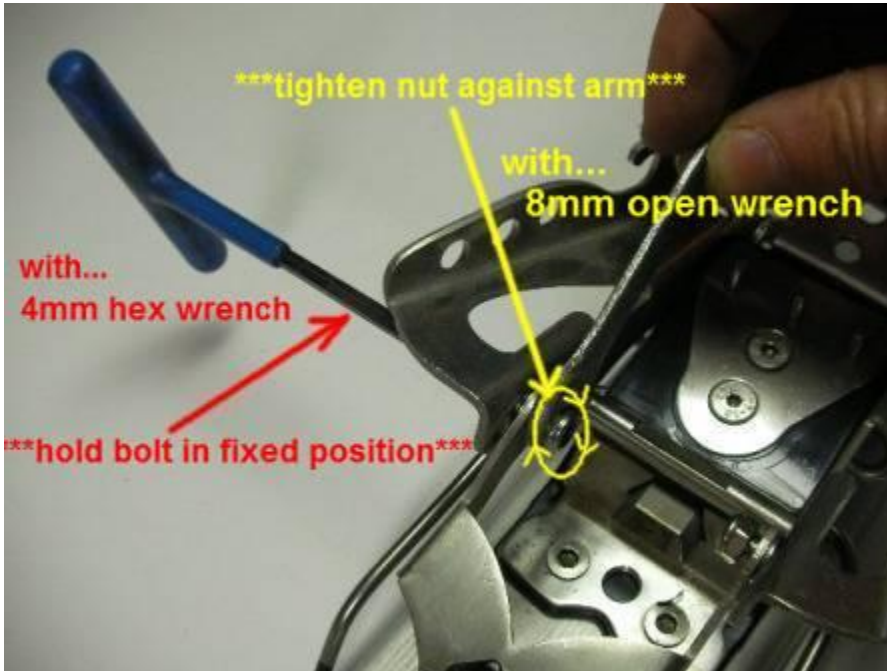
Place washer between toe box and arm of heel attachment. NOTE: the arms are threaded, screw bolt through arm using 4mm hex wrench.



Install bolts and washers as pictured above on both sides. Tighten the bolts until they are snug **\*\*\*then back them off 1/2 turn.\*\*\***

Screw lock nuts on end of bolts by hand until you can't go any further.

**IMPORTANT NEXT STEP:**



Tighten the lock nut against the arm of the heel attachment while holding the bolt in a fixed position (the bolt should not be turning while you tighten the nut). Turn the lock nut until it is very tight. At this point, the heel attachment should continue to rotate up and down freely. **If there is too much resistant for heel rotation, loosen lock nut and back bolt out another 1/2 turn and retighten nut while holding the bolt in this new fixed position.** It is OK to have a slight amount of resistance when rotating the heel attachment up and down, but too much resistance will loosen the bolt while you are skiing!



... installation complete.