

These instructions describe how to step into Telebulldog bindings toe box.



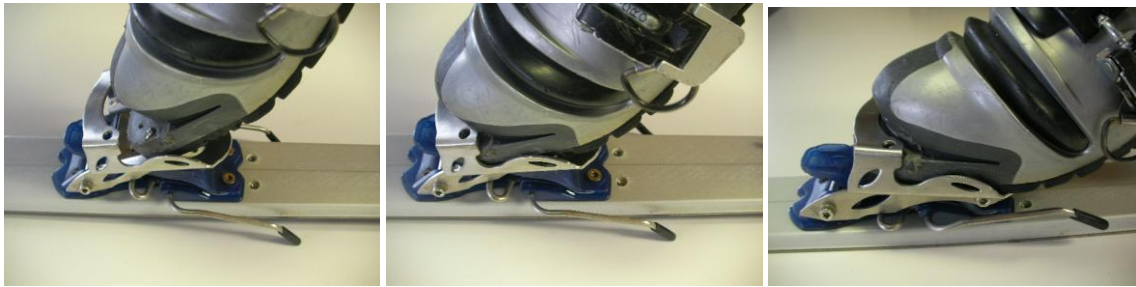
Picture above shows Telebulldog toe box open and ready to receive boot. (left NTbulldog , right LiteDogz)



The RTbulldog series of bindings with heel attachment have short pins that accommodate boots without pin holes like the NTN boot on the left.



LiteDogz and classic Telebulldog bindings have longer pins that align with pin holes in the ski boot and hold the boot in the binding without the heel attachment.



To step onto the toe box, hold the heel of your boot up high and slide the duckbill into the binding. Step down gently at first to properly align the boot, then snap down briskly with the ball of your foot to engage the locking mechanism. When toe box is fully locked in place the toggle will rest tight against the housing of the binding (picture below).



**When testing the step in function of the bindings, you should have the binding mounted to a ski and use your foot in the ski boot to generate adequate force. Attempting to snap the binding shut without the foot in the boot generally does not generate enough force. The pins are long and need to sink into the sole of the boot.**



RT/NT/LTbulldog bindings use the same step in function but have the added heel attachment.

