

These instructions describe the use of the touring clip for Telebulldog bindings.



Picture above shows the NTxbulldog with the touring clip installed.

This single part allows the Telebulldog bindings to be converted to a free pivot touring binding.



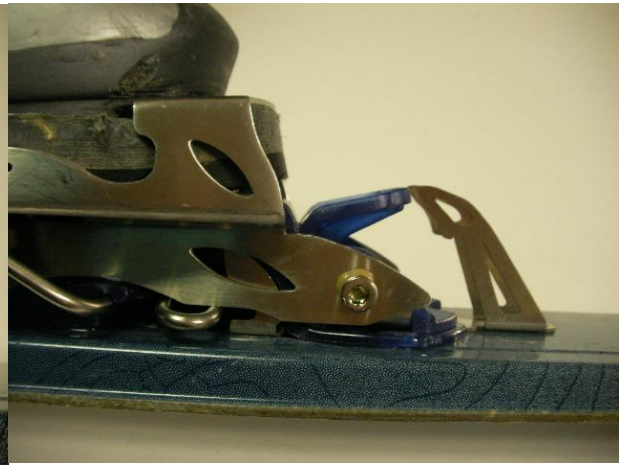
The touring clip fits into slots molded in the bottom of the brake plate.



Place the touring clip under the brake plate and mount the binding as you would normally...



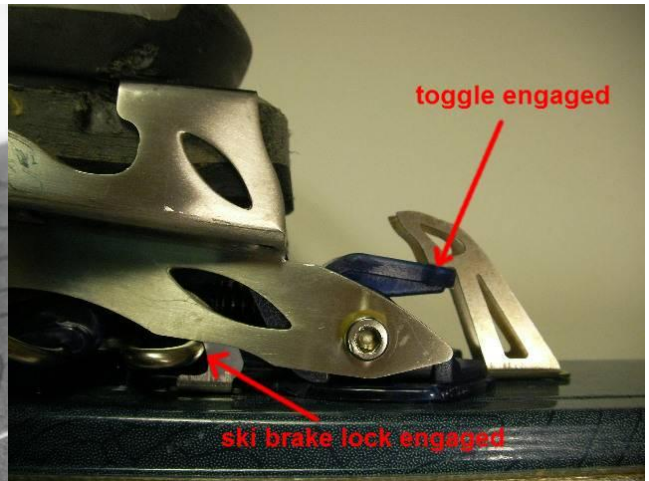
Once mounted the touring clip should look like this.



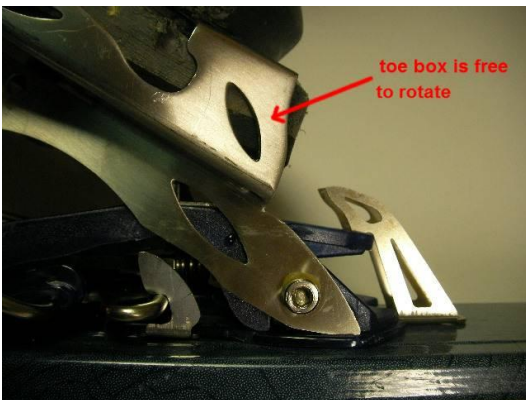
To engage the touring clip, you must first step into the binding with your ski boot.



Then, press down on the toggle using a ski pole and slide the clip back using your fingers...



...simultaneously, lift the heel of the boot up slightly to allow the ski brake lock to slide into place.



Once the clip is engaged, the toe box is free to rotate for ski touring. As you can see above, the toggle remains depressed and the ski brake is locked in a retracted position



To disengage tour mode, do the opposite steps:  
 1) keep your boot in the binding  
 2) use a ski pole to depress the toggle  
 3) slide the tour clip forward while lifting the heel of the ski boot slightly.

**IMPORTANT POINTS:**

- \*Do not get glue or dirt under the tour clip when mounting the binding. The clip needs to slide freely to work properly.
- \*Be sure the clip is properly seated under the brake plate when mounting the bindings.
- \*Step into the binding with your ski boot to engage or disengage the clip.
- \*Use your ski pole to depress the toggle when engaging or disengaging the clip.